

Addendum #1 – Issued: May 14, 2018

Deadline for Questions: May 18, 2018 (end of day)
Final Addendum to be Issued (if Applicable): May 22, 2018

Tender Closing Date: May 23, 2018 @ 2:00 PM, at:
Township of Champlain Office
948 Pleasant Corner Road East, Vankleek Hill, ON

The following changes are effective immediately and shall be incorporated into the Contract Documents.

Questions & Answers

- 1.1 At Storm MH # 240 there is a 375mm stub on the west side that gets connected to the existing 150mm storm. Is the size correct and if so there is no item to cover the 375mm.
- Yes, the size is correct - a larger lateral is being installed to capture a future storm lateral. An item was added to the Form of Tender for the 375mm storm sewer.
- 1.2 At Storm MH # 260 there is a 300mm from Russell Street. Where do we connect to the existing and this quantity does not appear to be included in item # 22?
- Connection to the existing storm is to be made approximately 12.5 m west of MH260. Quantity was added to the Form of Tender Item #22 to include this work. Refer to CD1.2 for more information.
- 1.3 Item # 31, 100mm Sanitary Lateral - Extension has a quantity of 10m. There are 3 services shown on this section. It is provisional, but should the quantity not be closer to 26 m?
- The quantity for Item #31 was revised in the Form of Tender. Note that another sanitary service was added as per CD1.1.
- 1.4 At the intersection of Mill St and Highway #34 the watermain note says "New 200x200x150mm Tee". Should it not be a cross and the mainline is 250mm?
- Yes, the fitting should be a 250x150 mm cross. See below for modification.
- 1.5 At approximate station 1+556 the watermain changes from 200mm to 250mm. The location of the reducer is not shown. This will determine that the gate valve shown at approximately the same station is 200mm or 250mm.
- The reducer is to be installed just north of the new valve, as per CD1.3.
- 1.6 Items #30 and #31, sanitary sewer description reads 100 mm, should it not be 125mm per the note on C1.2?

New laterals are to be 125mm diameter. The Form of Tender was updated accordingly.

1.7 For Item #18 and Item #45 (hydrants), please confirm the quantity.

There are 6 hydrants to be removed and 6 new hydrants to be installed. The Form of Tender was updated accordingly. Also see below.

1.8 Are the quantities reversed for Item #50 and Item #51?

Yes, Granular "A" and Granular "B" quantities were reversed. The Form of Tender was updated accordingly.

1.9 What is the pipe material of existing storm sewers to be removed?

Existing storm sewers and catch basin leads on the west side of Highway 34 consist of concrete pipe. The pipe material for the storm sewer on the east side of Highway 34 could not be confirmed but is believed to consist of corrugated steel pipe (CSP).

Information for Tenderers

1.10 **Add** item d) under item **1.5 Disqualification of Tenders** to read as follows:

- d) Are submitted by a firm other than listed below (in alphabetical order), having attended the mandatory pre-construction meeting:
 - i. A.L. Blair Construction,
 - ii. Arnco Construction,
 - iii. Cornwall Gravel Co. Ltd.,
 - iv. Greenbelt Construction,
 - v. Loiselle Inc.,
 - vi. Louis W Bray Construction,
 - vii. Normand Excavation Inc.,
 - viii. Robert Excavating.

Form of Tender

1.11 Section 2 – Form of Tender

- a) **Replace** page 2, 3 and 4 of 13 (Schedule of Items and Prices) with the attached page 2, 3, 4 of 13 – Addendum #1. Modifications are **bolded**.

Special Provisions

1.12 **Item No. 73 – Traffic Control**

- a) **Revise** item (d) viii. to read as follows:

- viii. "Road closure will only be allowed on **week nights.**"
- b) **Revise** item (d) ix. to read as follows:
 - ix. "Road closure may only begin at **6:00 PM on a week night except Friday** and the intersection must be reopened to traffic from/to all directions by **7:00 AM the following day.**"

Contract Drawings

- 1.13 Drawing C1.1 – PLAN AND PROFILE OF HIGHWAY 34 FROM STA 0+937.5 TO STA 1+075
 - a) **Add** sanitary lateral as shown on attached CD1.1.
 - b) **Revise** extents of new sidewalk as shown on attached CD1.1.
- 1.14 Drawing C1.3 – PLAN AND PROFILE OF HIGHWAY 34 FROM STA TO STA
 - a) **Revise** extents of new 300mm dia. storm sewer along Russell Street as shown on attached CD1.2.
- 1.15 Drawing C1.5 – PLAN AND PROFILE OF HIGHWAY 34 FROM STA 1+450 TO STA 1+575
 - a) **Add** location of watermain reducer as shown on attached CD1.3.
- 1.16 Drawing R1.6 – REMOVALS PLAN OF HIGHWAY 34 FROM STA 1+575 TO STA 1+700
 - a) **Add** hydrant removal at station 1+616 (located under T.B.M. #6).
- 1.17 Drawing R1.7 – REMOVALS PLAN OF HIGHWAY 34 FROM STA 1+700 TO STA 1+825
 - a) **Add** hydrant removal at station 1+790 (located under T.B.M. #7).

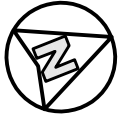
END OF ADDENDUM #1

2.1 SCHEDULE OF ITEMS AND PRICES

Item	Description	Unit	Tender Quantity	Unit Price	Tender Amount
1	Removal of Trees	EA	1		
2	Removal of Traffic Signs	EA	20		
3	Removal of Asphalt Roadway, Driveways and Walkways	M2	10,500		
4	Removal of Interlock Brick Driveway and Walkway	M2	15		
5	Removal of Concrete Sidewalk, Walkway and Steps	M2	2,125		
6	Removal of Concrete Curbs (All Types)	M	1,500		
7	Removal of Storm Sewer and Culverts (All Diameters)	M	1,450		
8	Abandon Storm Sewer (<= 375mm Ø) (Provisional)	EA	20		
9	Abandon Storm Sewer (> 375mm Ø) (Provisional)	EA	20		
10	Removal of Storm Lateral (All Dia.'s)	M	100		
11	Removal of Asbestos-Cement Watermain (All Diameters)	M	1,050		
12	Removal of 200mm Ø Asbestos-Cement Sanitary Sewer (Provisional)	M	7		
13	Removal of Sanitary Lateral (All Dia.'s) (Provisional)	M	9		
14	Removal of Water Services	M	650		
15	Removal of Sanitary Forcemain	M	50		
16	Removal of Catchbasins	EA	14		
17	Removal of Maintenance Holes	EA	11		
18	Removal of Fire Hydrants & Lead	EA	6		
19	Asphalt Milling	M2	130		
20	Common Excavation & Fill	LS	1		
21	New 250mm dia. Storm Sewer	M	90		
22	New 300mm dia. Storm Sewer	M	287		
23	New 375mm dia. Storm Sewer	M	6		
24	New 450mm dia. Storm Sewer	M	167		

25	New 600mm dia. Storm Sewer	M	230		
26	New 675mm dia. Storm Sewer	M	340		
27	New 200mm \varnothing Sanitary Sewer (Repair - Provisional)	M	7		
28	New 200mm Sanitary Sewer (Extension - Provisional)	M	104		
29	New 100mm dia. Storm Sewer Lateral	M	600		
30	New 100mm dia. Sanitary Sewer Lateral (Repair – Provisional)	M	9		
31	New 125mm dia. Sanitary Sewer Lateral (Extension – Provisional)	M	41		
32	New 600x600mm Precast Catchbasin	EA	24		
33	New 600x1450mm Precast Catchbasin	EA	3		
34	New Precast Headwall & Grate	EA	1		
35	New 1,200mm dia. Storm Manhole	VM	20.5		
36	New 1,200mm dia. Sanitary Manhole (Extension – Provisional)	VM	2.5		
37	New 1,500mm dia. Storm Manhole	VM	19.0		
38	Temporary Potable Water Supply	LS	1		
39	New 100mm dia. Sanitary Forcemain	M	50		
40	New 150mm dia. Watermain	M	90		
41	New 200mm dia. Watermain	M	575		
42	New 250mm dia. Watermain	M	400		
43	19mm dia. Water Service c/w Curb Stop	M	625		
44	25mm dia. Water Service c/w Curb Stop	M	25		
45	New Hydrant c/w Lead and Valve	EA	6		
46	Cured-In-Place Sanitary Sewer Lining (Provisional)	LS	1		
47	Pipe Insulation	M2	250		
48	Adjustment of Existing Manholes	EA	12		
49	Geotextile for Subgrade (Provisional)	M2	13,250		
50	Roadway & Boulevard Granular 'B'	T	20,750		
51	Roadway & Boulevard Granular 'A'	T	5,150		
52	Roadway & Boulevard HL-8 Asphalt	T	2,200		

53	Roadway & Boulevard HL-4 Asphalt	T	1,250		
54	Concrete Mountable Curb	M	1,535		
55	Concrete Barrier Curb and Gutter	M	225		
56	Concrete Barrier Curb	M	20		
57	Concrete Sidewalk & Walkway	M2	2,300		
58	Concrete Walkway Steps (Provisional)	EA	25		
59	Tactile Walking Surface Indicator Plates	EA	34		
60	Perforated Subdrain for Roadway	M	1,760		
61	Perforated Subdrain in Ditch	M	50		
62	Granular Driveway Reinstatement	M2	400		
63	Asphalt Driveway Reinstatement	M2	850		
64	Interlocking Brick Driveway & Walkway Reinstatement	M2	15		
65	Pavement Markings	LS	1		
66	Traffic Signs Materials – Allowance	EA	1	\$15,000	\$15,000
67	Traffic Signs Installation	EA	30		
68	Guide Rail	M	35		
69	Traffic Detection Loop Reinstatement	LS	1		
70	Decorative Fencing	M	15.5		
71	Rip-Rap c/w Geotextile	T	20		
72	Topsoil and Sod	M2	3,000		
73	Traffic Control	LS	1		
74	Paid Duty Officer (PDO) – Allowance	LS	1	\$15,000	\$15,000
75	Dust Suppressant	KG	5,000		
76	Preconstruction Survey	LS	1		
77	Lump Sum for Other Requirements	LS	1		
78	Temporary Pole Support – Allowance	LS	1	\$25,000	\$25,000
79	Contingency Allowance	LS	1	\$150,000	\$150,000
TOTAL AMOUNT (Excl. HST)					\$



144

1+050

HIGHWAY 34

EXISTING GAS SERVICE.

EXISTING 150mmØ XHP VITAL GAS MAIN.

NEW 200mmØ WATERMAIN.

NEW 200mmØ SANITARY SEWER.

NEW 125mmØ SANITARY LATERAL.

M:\2017\17197 - Highway 34 Reconstruction\6.0 Dwg\6.2 Civil\2.0 Production\17197-C-1-1-8.dwg May 14, 2018-3:00pm BY: (Francois.Lafleur)



208 PITT STREET
CORNWALL, ONTARIO
CANADA, K6J 3P6
TEL: 613-935-3775
FAX: 613-935-6450
WEBSITE: EVBengineering.com

PROJECT:

HIGHWAY 34 SOUTH RECONSTRUCTION

TITLE:

LOCATION OF NEW SANITARY SERVICE
ADDENDUM #1

SCALE:

1:250

JOB NO:

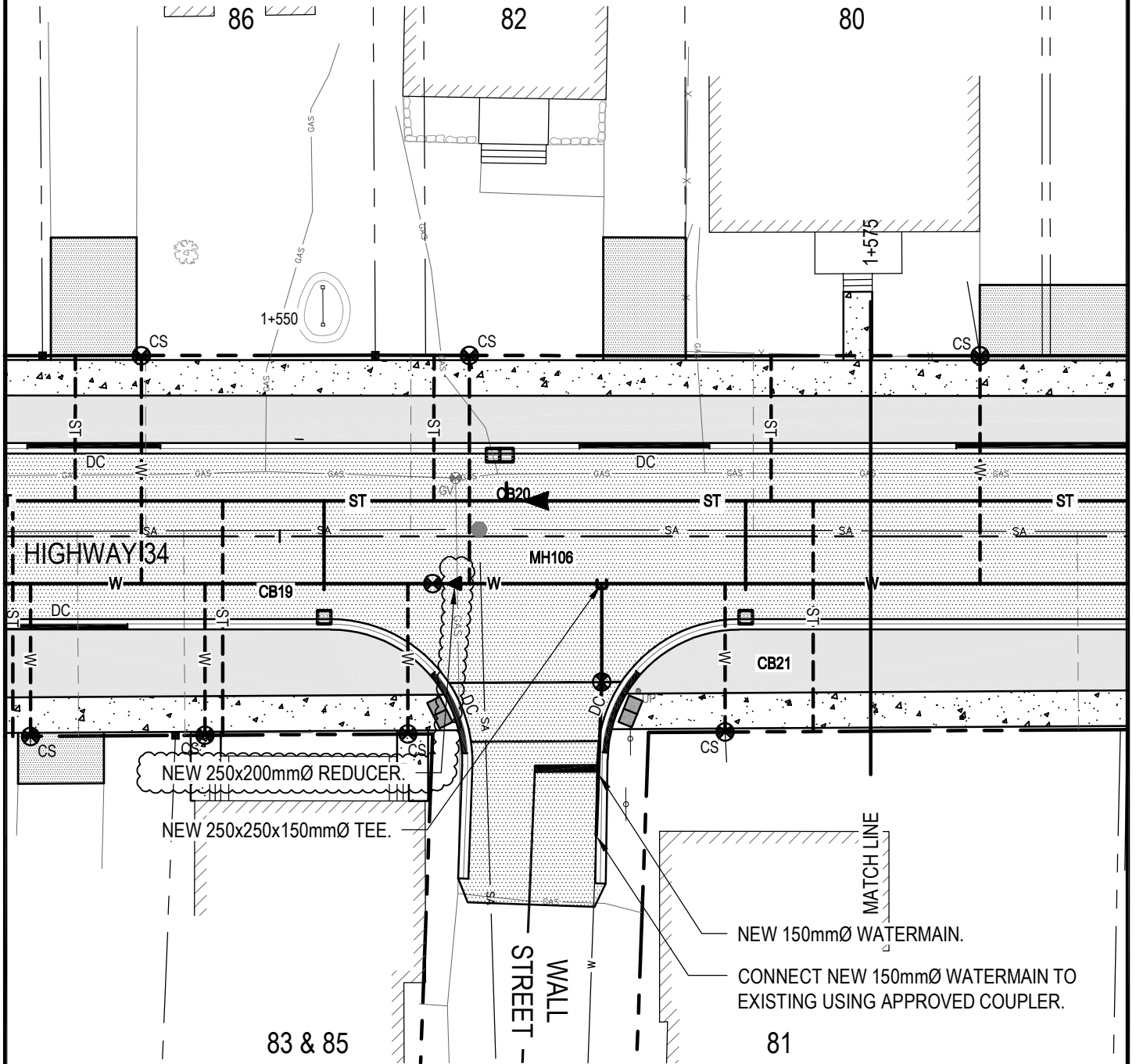
17197

DATE:

2018/05/14

DRAWING NO.

CD1.1



M:\2017\17197 - Highway 34 Reconstruction\6.0 Dwg\6.2 Civil\2.0 Production\17197-C1-1-8.dwg May 14, 2018-3:13pm BY: (Francois.Lafleur)



208 PITT STREET
 CORNWALL, ONTARIO
 CANADA, K6J 3P6
 TEL: 613-935-3775
 FAX: 613-935-6450
 WEBSITE: EVBengineering.com

PROJECT:

HIGHWAY 34 SOUTH RECONSTRUCTION

TITLE:

LOCATION OF WATERMAIN REDUCER
 ADDENDUM #1

SCALE:
 1:250

JOB NO:
 17197

DATE:
 2018/05/14

DRAWING NO.
 CD1.3